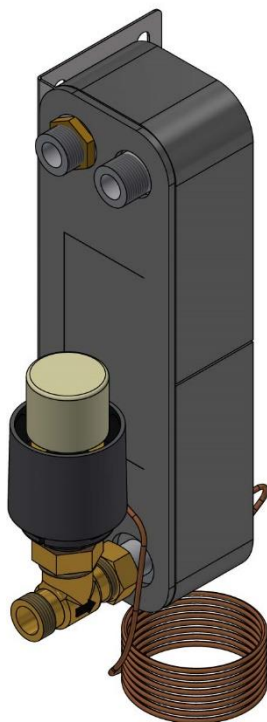


Installation, service and operating instruction Cetetherm AquaStar

Domestic hot water unit for apartments



Contents

1	General	4
1.1	Schematic diagram	4
2	Installation	4
2.1	Unpacking	4
2.2	Preparation	4
2.3	Mounting	5
2.4	Adjustments and setting	5
2.5	Dismantlement	6

Cetetherm AquaStar Installation, service and operating instruction



The installation work must be carried out by an authorized installation contractor. Before the system is taken into operation, it must be pressure tested in accordance with relevant regulations.



The temperature and the pressure of the primary heating water are very high. **Only qualified technicians** are allowed to work with the substation. Incorrect operation may cause serious personal injury and result in damage to the building.



If the hot water temperature is set too high, people may be scalded. If the hot water temperature is set too low, unwanted bacteriological growth may occur in the hot water system. This can result in serious personal injury.



When starting up the substation: To avoid the risk of scalding, make sure that no-one draws any hot water until the hot water temperature has been adjusted.



Cetetherm strongly recommends using a filter to protect the heat exchanger and valve, from pollution.



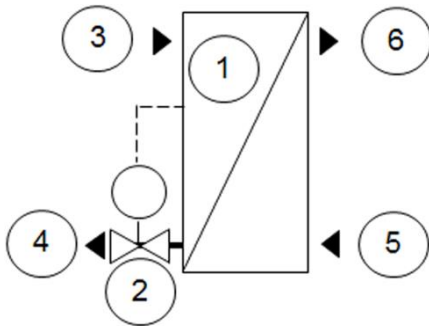
Start heating circulation by first opening the valves in the primary heating supply and then return lines, in order to avoid pollutions in the system. Open up the valves slowly to avoid pressure surges.



The heat exchanger must be mounted with the actuator in standing position.

1 General

1.1 Schematic diagram



1. Heat exchanger and temperature controller for hot water
2. Control valve for hot water
3. Heating network media, supply
4. Heating network media, return
5. Cold water (cw)
6. Hot water (hw)

Picture 1

2 Installation

2.1 Unpacking

- Remove the transport packaging and check that the product has not been damaged in transit and that the consignment agrees with the specifications.

2.2 Preparation

- Check the applicable regulations of the primary heating supplier. The available differential pressure should be at least 50 kPa and at most 600 kPa.

Where the differential pressure is higher, a differential pressure controller should be added to the installation.

2.3 Mounting

- Mount the AquaStar wall frame on the wall.

NOTE: The frame must be mounted so when the AquaStar is mounted to the frame its pipe connections are placed to the left and the actuator is in upright position, see the picture on the front page.

- Fit the insulation on the heat exchanger and mount the heat exchanger to the wall frame, with washer and nut, tighten with 45Nm.

NOTE: The wall frame must be mounted to the heat exchangers hot and cold water connections.

- Fit the actuator on the valve, tighten with 45 Nm.
- Place the gasket on the connection with the union nuts and mount the valve. Tighten with 45 Nm.
- Connect the pipe work to the connection points on AquaStar.

Tighten all the nuts with 45 Nm.

2.4 Adjustments and setting

- Adjust the hot water temperature by having a hot water tap open at normal flow rate for a time. Measure the temperature at the draw-off point with a thermometer.

NOTE: Make sure that no cold water is mixed with the hot water while making this adjustment, for example through leaking check valves or a thermostatic mixing valve.

Cetetherm AquaStar

Installation, service and operating instruction

- The hot water temperature can be adjusted by turning the knob anticlockwise for hotter or clockwise for colder, while drawing off hot water. The stabilisation time after adjustment is about 20 seconds.

NOTE: Cetetherm recommends that the tap water temperature is set to 10°C less than the primary inlet temperature.

- Seal the hot water actuator after setting, see Picture 2.
- The owner of the building must be instructed in the setting and care of the unit. It is particularly important to provide information about the safety systems and about hazards that may arise in relation to the high pressure and temperature of the district heating water.



Picture 2

2.5 Dismantlement

When the time comes for the AquaStar to be dismantled and scrapped it must be disposed of in the correct manner in accordance with local or national regulations.

Cetetherm AB
Logistikvägen 9
372 38 Ronneby – Sweden
www.cetetherm.com

Cetetherm

The logo for Cetetherm features the company name in a bold, black, sans-serif font. A thick, green horizontal bar is positioned directly beneath the text, extending slightly beyond the left and right edges of the letters.